

SPECIFICATIONS:

DESCRIPTION

Outdoor wall sconce features handcrafted European glass.

LAMPING

Standard: 75W A19 120V, *lamps not included.*

CFL: 18W CFL 120V, *lamps not included.*

GU24 CFL: Self-ballasted GU24 lampholders. 18W max, 120V, *lamps not included.*

DIFFUSER

Glass diffuser is hand-painted in various decors with Clear inside glass. The Black and Bronze finishes are opaque, while the White is semi-transparent for increased light output. Inside glass may be softly frosted (FR) to enhance the appearance.

Dimensions are 11.75" W x 11.375" H x 4.25" D.

CONSTRUCTION

Stamped Stainless steel fitter. Glass is secured by stainless steel set screws.

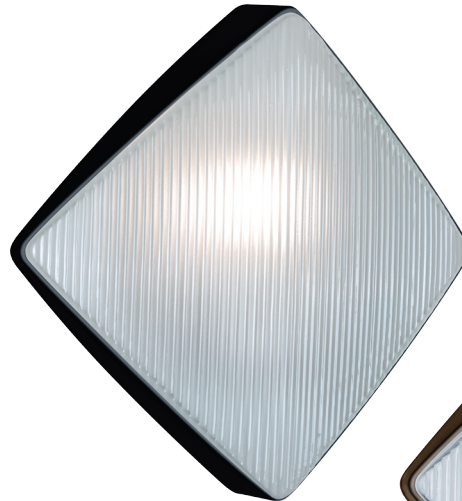
MOUNTING

Installs directly to a 4" octagonal outlet box, centered on fixture. 75°C supply wire required for incandescent lamping.

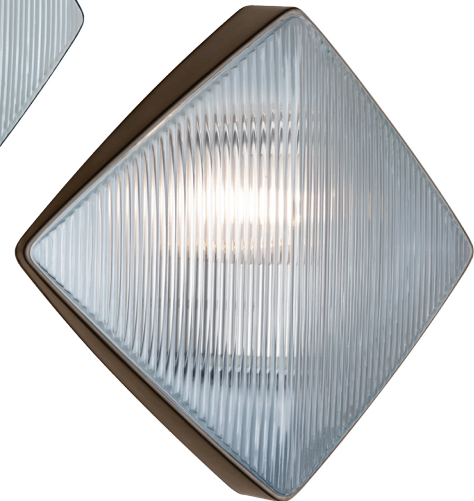
LABELS

UL or ETL Listed. Suitable for Wet Locations.

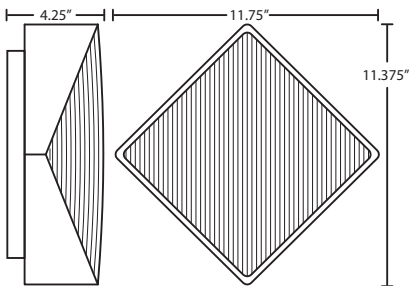
May be used in Interior or Exterior applications.



311057-FR
Black with Frost option



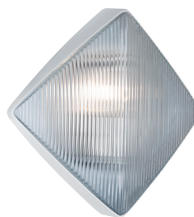
311098
Bronze



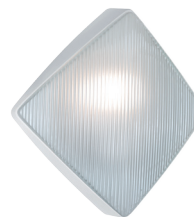
ORDERING:

3 1 1 0 - - - - -

DECOR	LAMPING	OPTIONS
53 White	(Blank) 1x 75W A19 (Incan)	FR Frost
57 Black	F1 1x 18W CFL	
98 Bronze	GU24 1x GU24, 18W max	



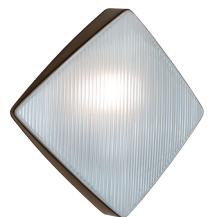
311053
White



311053-FR
White with Frost option



311057
Black



311098-FR
Bronze with Frost option

Project Information:

All dimensions provided are nominal. Allowance must be made for dimensional tolerance in handcrafted glasses.